






**Tests** [Edit Test](#)

 Tests  Groups  Links

## **Primary 3 Science (Term 3) - ACS** ✓

[Duplicate](#) [Print](#) [Delete](#)

[Assign Test](#)

### Test Introduction

[Edit Introduction \(1\)](#)

**26 Questions** (16 Points)

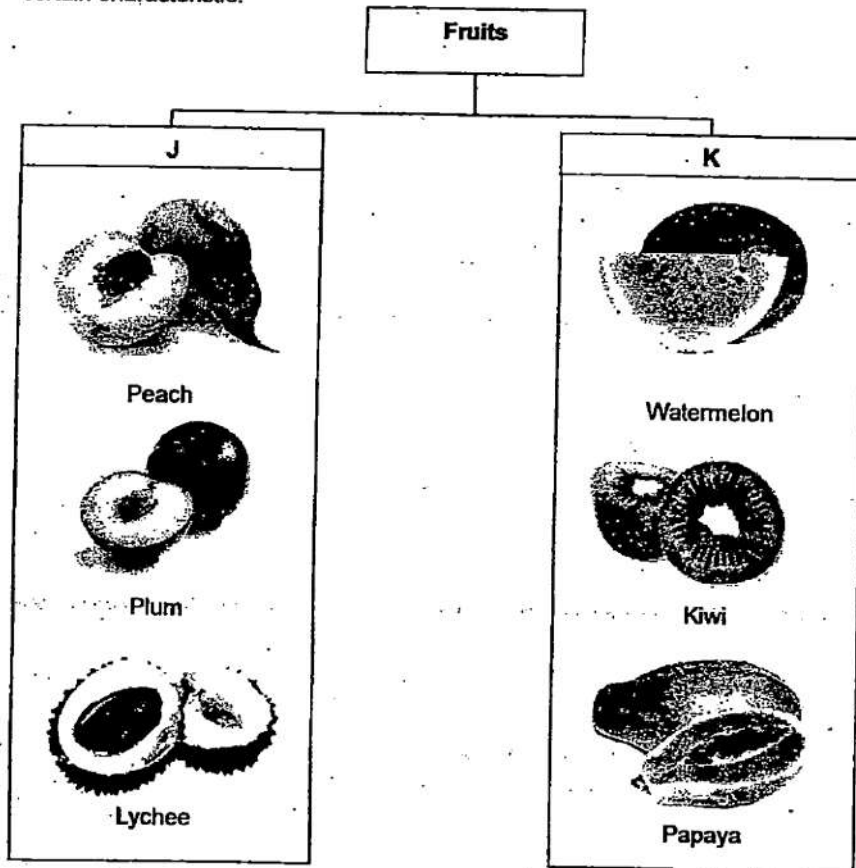
**Question Bank:** 19,439 Questions 

[Test Questions](#) [1 Test Assignment](#)

### Question 1

*Primary 3 Science* » Primary 3 Science (Term 3) 1 pt

The classification chart below shows how some fruits were classified according to a certain characteristic.



Which of the following is likely to be the sub-headings for J and K?

	J	K
(1)	Edible	Not edible
(2)	Rough skin	Smooth skin
(3)	One seed	Many seeds
(4)	Oval-shaped	Round-shaped

- A) 1  
 B) 2  
 ✓ C) 3  
 D) 4

Question Type: Multiple Choice  
 Randomize Answers: No  
 Date Added: Wed 17th Jun 2020  
 Last Modified: N/A  
 QID#: 21,795,883

[Answers](#) | [Edit](#) | [Duplicate](#) | [Used In](#) | [Reorder](#)

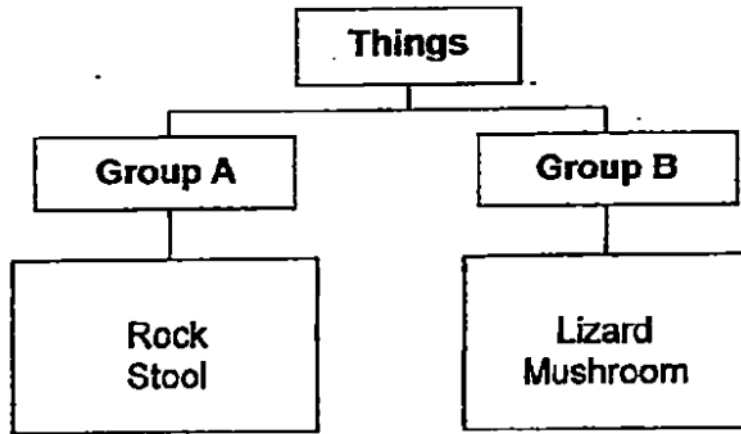
[Remove From Test](#)

## Question 2

Primary 3 Science » Primary 3 Science (Term 3)

1 pt

Study the classification chart below.



Which of the following thing(s) can be classified under Group B?

- A. Clouds
- B. Bacteria
- C. Rubber Duck
- D. Bird's Nest Fern

- A) B Only
- ✓ B) B and D only
- C) A, C and D
- D) A, B, C and D

**Question Type:** Multiple Choice  
**Randomize Answers:** No  
**Date Added:** Wed 17th Jun 2020  
**Last Modified:** N/A  
**QID#:** 21,795,986

[Answers](#) | [Edit](#) | [Duplicate](#) | [Used In](#) | [Reorder](#)

[Remove From Test](#)

### Question 3

Primary 3 Science » Primary 3 Science (Term 3)

1 pt

Which of the following statements is not true about all flowering plants?

- A) They make their own food.
- ✓ B) They have flowers all year round
- C) They will produce flowers when the conditions are right.
- D) They can produce flowers when they become adult plants.

**Question Type:** Multiple Choice  
**Randomize Answers:** No  
**Date Added:** Wed 17th Jun 2020  
**Last Modified:** N/A  
**QID#:** 21,796,007

[Answers](#) | [Edit](#) | [Duplicate](#) | [Used In](#) | [Reorder](#)

[Remove From Test](#)

### Question 4

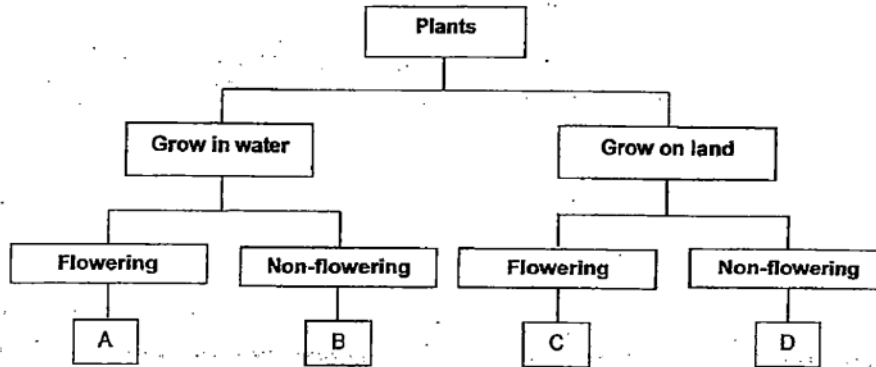
Primary 3 Science » Primary 3 Science (Term 3)

1 pt

The following table shows some characteristics of two plants, X and Y.

Characteristics	Plant X	Plant Y
Does it grow in water?	Yes	No
Does it have flowers?	No	Yes

Use the classification chart to identify Plants X and Y.



Which of the following letters, A, B, C and D, in the flowchart best represent Plants X and Y?

	Plant X	Plant Y
(1)	B	A
(2)	D	C
(3)	A	D
(4)	B	C

- A) 1  
 B) 2  
 C) 3  
 ✓ D) 4

**Question Type:** Multiple Choice  
**Randomize Answers:** No  
**Date Added:** Wed 17th Jun 2020  
**Last Modified:** N/A  
**QID#:** 21,796,027

[Answers](#) | [Edit](#) | [Duplicate](#) | [Used In](#) | [Reorder](#)

[Remove From Test](#)

## Question 5

Primary 3 Science » Primary 3 Science (Term 3)

1 pt

The table below states the characteristics of Animals X, Y and Z. A tick in the box indicates that the animal has the characteristic.

Characteristics	Animal X	Animal Y	Animal Z
Can swim		✓	✓
Has hair			✓
Has 6 legs	✓		

Which one of the following groups of animal do Animal X and Animal Z belong to?

	Animal X	Animal Z
(1)	Reptile	Fish
(2)	Insect	Mammal
(3)	Amphibian	Mammal
(4)	Insect	Reptile

- A) 1  
 ✓ B) 2  
 C) 3  
 D) 4

Question Type: Multiple Choice  
 Randomize Answers: No  
 Date Added: Wed 17th Jun 2020  
 Last Modified: N/A  
 QID#: 21,796,050

[Answers](#) | [Edit](#) | [Duplicate](#) | [Used In](#) | [Reorder](#)

[Remove From Test](#)

## Question 6

Primary 3 Science » Primary 3 Science (Term 3)

1 pt

The picture below shows a frog.



Frog

Which parts of the frog help it to breathe on land and in water?

	Breathe on land	Breathe in water
(1)	Lungs	Moist skin
(2)	Dry skin	Gills
(3)	Lungs	Gills
(4)	Dry skin	Moist skin

- ✓ A) 1  
 B) 2  
 C) 3  
 D) 4

**Question Type:** Multiple Choice  
**Randomize Answers:** No  
**Date Added:** Wed 17th Jun 2020  
**Last Modified:** N/A  
**QID#:** 21,796,059

[Answers](#) | [Edit](#) | [Duplicate](#) | [Used In](#) | [Reorder](#)

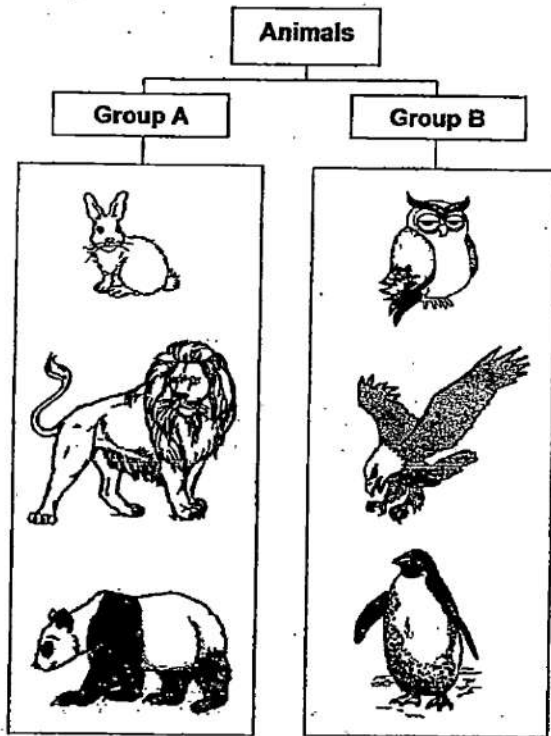
[Remove From Test](#)

## Question 7

Primary 3 Science » Primary 3 Science (Term 3)

1 pt

Some animals are grouped as shown below.



Which of the following is a possible grouping for the animals in the diagram above?

- A) They are grouping according to what they eat.
- B) They are grouping according to where they live.
- ✓ C) They are grouping according to their outer covering.
- D) They are grouping according to how they move about.

**Question Type:** Multiple Choice  
**Randomize Answers:** No  
**Date Added:** Wed 17th Jun 2020  
**Last Modified:** N/A  
**QID#:** 21,796,118

[Answers](#) | [Edit](#) | [Duplicate](#) | [Used In](#) | [Reorder](#)

[Remove From Test](#)

## Question 8

Primary 3 Science » Primary 3 Science (Term 3)

1 pt

Which of the following objects can be used to see microorganisms clearly?

- A) naked eye
- B) binoculars
- ✓ C) microscope
- D) magnifying glass

**Question Type:** Multiple Choice  
**Randomize Answers:** No  
**Date Added:** Wed 17th Jun 2020  
**Last Modified:** N/A

QID#: 21,796,135

[Answers](#) | [Edit](#) | [Duplicate](#) | [Used In](#) | [Reorder](#)
[Remove From Test](#)**Question 9**

Primary 3 Science » Primary 3 Science (Term 3)

1 pt

Sanjay came up with the following statements about fungi and bacteria after his Science class.

- A. Some fungi can be eaten
- B. Bread mould is an example of bacteria
- C. Some fungi can be seen with the naked eye
- D. Bacteria do not respond to changes in the surroundings

- A) D only
- ✓ B) A and C only
- C) A, B and C only
- D) A, B, C and D

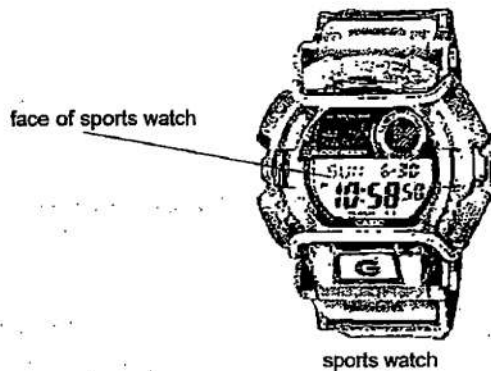
**Question Type:** Multiple Choice  
**Randomize Answers:** No  
**Date Added:** Wed 17th Jun 2020  
**Last Modified:** N/A  
**QID#:** 21,796,225

[Answers](#) | [Edit](#) | [Duplicate](#) | [Used In](#) | [Reorder](#)
[Remove From Test](#)**Question 10**

Primary 3 Science » Primary 3 Science (Term 3)

1 pt

The diagram below shows a sports watch used while swimming.



The table below shows the properties of materials W, X, Y and Z. They are the different materials used to make the different parts of the sports watch. Which of the following materials has the most suitable properties to make the face of the sports watch?

	Material	Properties
(1)	W	waterproof, opaque
(2)	X	waterproof, transparent
(3)	Y	strong, flexible
(4)	Z	strong, hard

- A) 1



- ✓ B) 2  
C) 3  
D) 4

**Question Type:** Multiple Choice  
**Randomize Answers:** No  
**Date Added:** Wed 17th Jun 2020  
**Last Modified:** N/A  
**QID#:** 21,796,274

[Answers](#) | [Edit](#) | [Duplicate](#) | [Used In](#) | [Reorder](#)

[Remove From Test](#)

## Question 11

Primary 3 Science » Primary 3 Science (Term 3)

1 pt

The picture below shows a pair of spectacles.



Ismail decided to carry out some tests on a few materials to find out which material is most suitable for making the frame of his spectacles.

Test	Properties
E	Whether it is light
F	Whether it is able to float on water
G	Whether it is waterproof
H	Whether it allows light to pass though

Which of the following two tests will help him decide on the most suitable material?

- A) E and F only  
✓ B) E and G only  
C) G and H only  
D) F and H only

**Question Type:** Multiple Choice  
**Randomize Answers:** No  
**Date Added:** Wed 17th Jun 2020  
**Last Modified:** N/A  
**QID#:** 21,796,341

[Answers](#) | [Edit](#) | [Duplicate](#) | [Used In](#) | [Reorder](#)

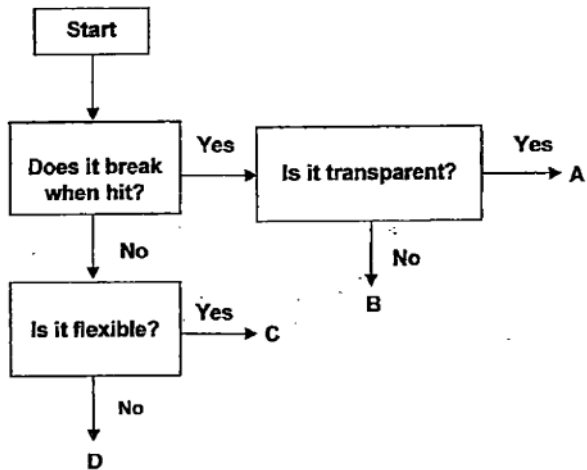
[Remove From Test](#)

## Question 12

Primary 3 Science » Primary 3 Science (Term 3)

1 pt

The flow chart below shows the properties of four objects made out of different materials A, B, C and D.



Which of the following objects can A, B, C and D be?

	A	B	C	D
(1)	Plastic table	Glass beaker	Clay pot	Rubber gloves
(2)	Glass beaker	Clay pot	Rubber gloves	Plastic table
(3)	Plastic table	Glass beaker	Rubber gloves	Plastic table
(4)	Glass beaker	Clay pot	Plastic table	Rubber gloves

- A) 1  
 ✓ B) 2  
 C) 3  
 D) 4

Question Type: Multiple Choice  
 Randomize Answers: No  
 Date Added: Wed 17th Jun 2020  
 Last Modified: N/A  
 QID#: 21,796,399

[Answers](#) | [Edit](#) | [Duplicate](#) | [Used In](#) | [Reorder](#)

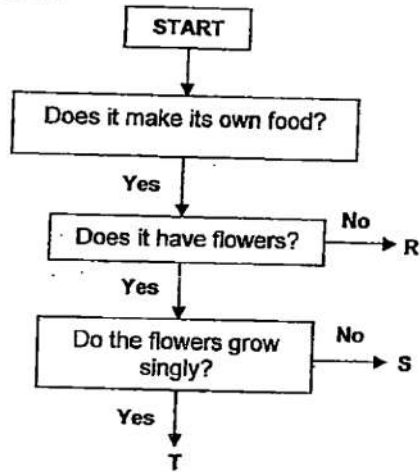
[Remove From Test](#)

## Question 13

Primary 3 Science » Primary 3 Science (Term 3)

1 pt

Study the flowchart below.



- (a) Based on the flowchart above, which of the following letters, R, S or T, best describes a rose as shown in the diagram below? [1]



Rose

- A) R  
B) S  
✓ C) T

Question Type: Multiple Choice  
Randomize Answers: No  
Date Added: Thu 16th Jul 2020  
Last Modified: N/A  
QID#: 22,460,803

[Answers](#) | [Edit](#) | [Duplicate](#) | [Used In](#) | [Reorder](#)

[Remove From Test](#)

## Question 14

Primary 3 Science » Primary 3 Science (Term 3)

0 pts

- (b) State all the characteristics of S from the flowchart above. [1]

---



---

Question Type: Essay  
Date Added: Wed 17th Jun 2020  
Last Modified: Thu 16th Jul 2020

QID#: 21,796,503

**Correctly answered feedback****b. It can make its own food, it has flowers and the flowers doe grow singly.****Incorrectly answered feedback****b. It can make its own food, it has flowers and the flowers doe grow singly.**[Answers](#) | [Edit](#) | [Duplicate](#) | [Used In](#) | [Reorder](#)[Remove From Test](#)**Question 15**

Primary 3 Science » Primary 3 Science (Term 3)

0 pts

**Select True or False after reading the statements about living things below.**

All bacteria are harmful to us.

- A) True
- ✓ B) False

**Question Type:** True False  
**Date Added:** Wed 17th Jun 2020  
**Last Modified:** N/A  
**QID#:** 21,796,540

[Answers](#) | [Edit](#) | [Duplicate](#) | [Used In](#) | [Reorder](#)[Remove From Test](#)**Question 16**

Primary 3 Science » Primary 3 Science (Term 3)

0 pts

**Select True or False after reading the statements about living things below.**

All living things give birth to their young.

- A) True
- ✓ B) False

**Question Type:** True False  
**Date Added:** Wed 17th Jun 2020  
**Last Modified:** N/A  
**QID#:** 21,796,547

[Answers](#) | [Edit](#) | [Duplicate](#) | [Used In](#) | [Reorder](#)[Remove From Test](#)**Question 17**

Primary 3 Science » Primary 3 Science (Term 3)

0 pts

**Select True or False after reading the statements about living things below.**

Living things respond to changes around them

- ✓ A) True

B) False

**Question Type:** True False  
**Date Added:** Wed 17th Jun 2020  
**Last Modified:** N/A  
**QID#:** 21,796,556

[Answers](#) | [Edit](#) | [Duplicate](#) | [Used In](#) | [Reorder](#)

[Remove From Test](#)

## Question 18

Primary 3 Science » Primary 3 Science (Term 3)

0 pts

Select True or False after reading the statements about living things below.

Mushrooms are plants because they reproduce from spores.

A) True

✓ B) False

**Question Type:** True False  
**Date Added:** Wed 17th Jun 2020  
**Last Modified:** N/A  
**QID#:** 21,796,562

[Answers](#) | [Edit](#) | [Duplicate](#) | [Used In](#) | [Reorder](#)

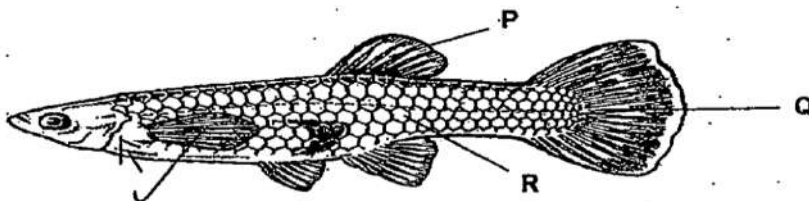
[Remove From Test](#)

## Question 19

Primary 3 Science » Primary 3 Science (Term 3)

1 pt

Study the picture of a fish below carefully.



(a) Name the body covering, R.

[1]

Accepted answers:

✓ scales

**Question Type:** Free Text  
**Date Added:** Thu 16th Jul 2020  
**Last Modified:** N/A  
**QID#:** 22,460,840

[Answers](#) | [Edit](#) | [Duplicate](#) | [Used In](#) | [Reorder](#)

[Remove From Test](#)

**Question 20**

Primary 3 Science » Primary 3 Science (Term 3)

0.5 pts

(b) Parts P and Q help the fish in its movement. Name parts P and Q. [1]

P: \_\_\_\_\_

**Accepted answers:**

✓ fin

**Question Type:** Free Text  
**Date Added:** Thu 16th Jul 2020  
**Last Modified:** N/A  
**QID#:** 22,460,843

[Answers](#) | [Edit](#) | [Duplicate](#) | [Used In](#) | [Reorder](#)

[Remove From Test](#)**Question 21**

Primary 3 Science » Primary 3 Science (Term 3)

0.5 pts

Q: \_\_\_\_\_

**Accepted answers:**

✓ tail

**Question Type:** Free Text  
**Date Added:** Thu 16th Jul 2020  
**Last Modified:** N/A  
**QID#:** 22,460,847

[Answers](#) | [Edit](#) | [Duplicate](#) | [Used In](#) | [Reorder](#)

[Remove From Test](#)**Question 22**

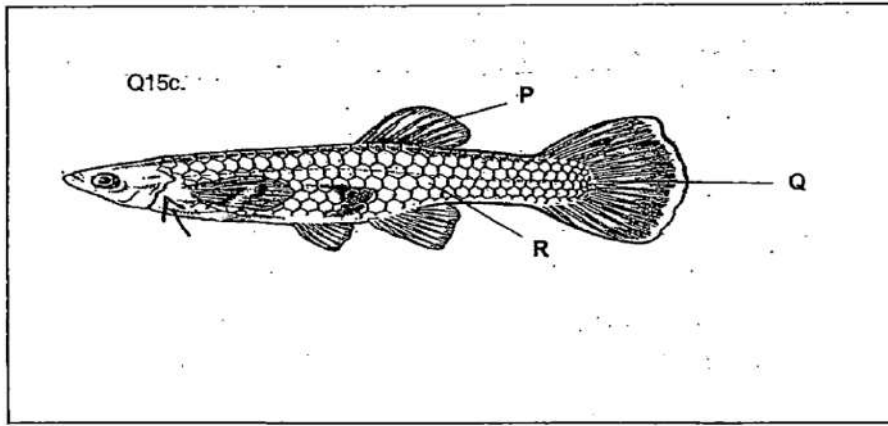
Primary 3 Science » Primary 3 Science (Term 3)

0 pts

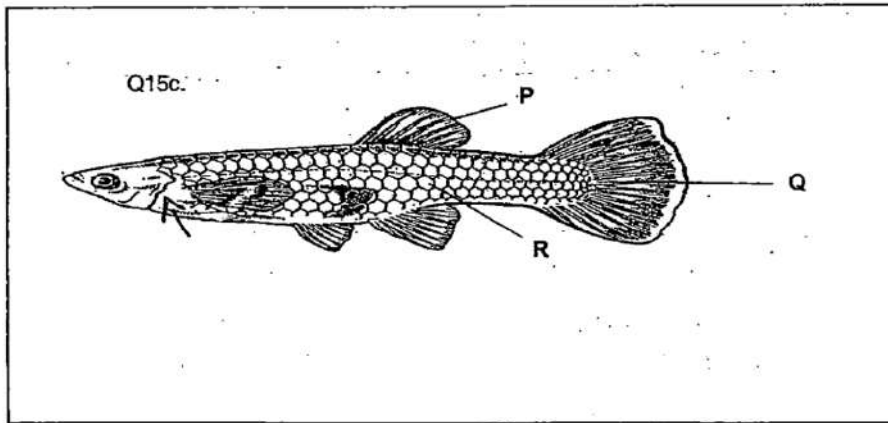
(c) Draw an arrow (→) on the fish to show the part of the fish that helps it to breathe. [1]

**Question Type:** Essay  
**Date Added:** Wed 17th Jun 2020  
**Last Modified:** Thu 16th Jul 2020  
**QID#:** 21,796,591

Correctly answered feedback



*Incorrectly answered feedback*



[Answers](#) | [Edit](#) | [Duplicate](#) | [Used In](#) | [Reorder](#)

[Remove From Test](#)

### Question 23

Primary 3 Science » Primary 3 Science (Term 3)

0 pts

Mrs Kwan carried out an experiment in class to find out how the amounts of water given to two identical plants affect their growth. Plant A was given 50ml of water daily while Plant B was given 100ml of water daily. She recorded her observations in the table below.

Day	Height of Plant A (cm)	Height of Plant B (cm)
1	5	5
2	6	7
3	7	10
4	8	12
5	9	14
6	10	16

- (a) Name another variable, apart from those already mentioned in the question, that has to be kept the same for the test to be fair. [1]

---



---

- (b) Based on the information in the table above, how does the amount of water given to the plants affect their growth? [1]

---



---

- (c) Apart from water, what else do plants need to survive? [1]

---

Question Type: Essay  
 Date Added: Wed 17th Jun 2020  
 Last Modified: Thu 16th Jul 2020  
 QID#: 21,796,627

**Correctly answered feedback**

- a. The amount of sunlight.
- b. The more water given to the plant, the taller it will be.
- c. Plants need nutrients, air and sunlight to survive.

**Incorrectly answered feedback**



- a. The amount of sunlight.
- b. The more water given to the plant, the taller it will be.
- c. Plants need nutrients, air and sunlight to survive.

[Answers](#) | 
 [Edit](#) | 
 [Duplicate](#) | 
 [Used In](#) | 
 [Reorder](#)

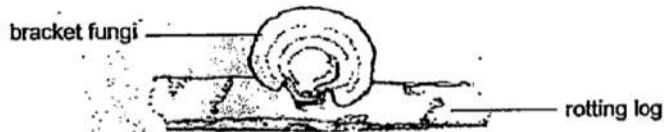
[Remove From Test](#)

## Question 24

Primary 3 Science » Primary 3 Science (Term 3)

0 pts

Ali and Wei Ming saw some bracket fungi on a rotting log in the school field.



- (a) Wei Ming told Ali that bracket fungi are plants. Is he correct? Explain your answer. [1]

---



---

- (b) Explain why bracket fungi are usually found on dead animals and plants like a rotting log. [1]

---



---

- (c) How do bracket fungi reproduce? [1]

---

Question Type: Essay  
 Date Added: Wed 17th Jun 2020  
 Last Modified: Thu 16th Jul 2020  
 QID#: 21,796,650

### Correctly answered feedback

- 'a. No. The bracket fungi has no roots, stems, leaves and does not need sunlight to grow.
- 'b. Bracket fungi feed on dead or decay things.
- 'c. Bracket fungi reproduce by spores.

### Incorrectly answered feedback

'a. No. The bracket fungi has no roots, stems, leaves and does not need sunlight to grow.

'b. Bracket fungi feed on dead or decay things.

'c. Bracket fungi reproduce by spores.

[Answers](#) | [Edit](#) | [Duplicate](#) | [Used In](#) | [Reorder](#)

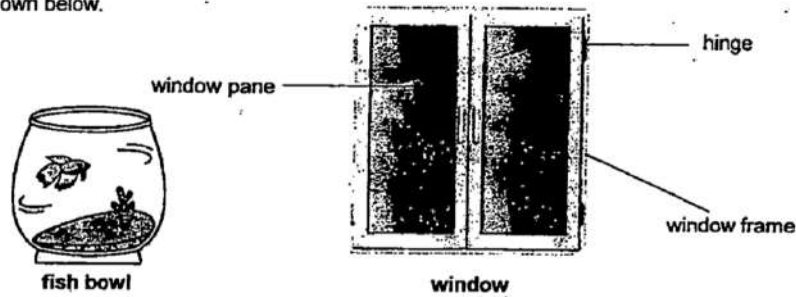
[Remove From Test](#)

## Question 25

Primary 3 Science » Primary 3 Science (Term 3)

1 pt

Kyan observed the objects in his house. He noticed a fish bowl and a window as shown below.



- (a) The fish bowl allows Kyan to see the fish while it is swimming. Which of the following materials, metal, ceramic or plastic, is most suitable for making the fish bowl? [1]

- A) metal  
B) ceramic  
✓ C) plastic

Question Type: Multiple Choice  
Randomize Answers: No  
Date Added: Thu 16th Jul 2020  
Last Modified: N/A  
QID#: 22,460,927

[Answers](#) | [Edit](#) | [Duplicate](#) | [Used In](#) | [Reorder](#)

[Remove From Test](#)

## Question 26

Primary 3 Science » Primary 3 Science (Term 3)

0 pts

- (b) What is the common property between the material used to make the fish bowl and material used to make the window pane? [1]

- (c) Kyan noticed that the hinges fixed on the window frames shown above are all made of metal. Which is the most important property of metal that makes it suitable for making this hinge? [1]

Question Type: Essay  
Date Added: Wed 17th Jun 2020  
Last Modified: Thu 16th Jul 2020  
QID#: 21,796,661

**Correctly answered feedback**

**b. They must be transparent.      c. It is strong.**

**Incorrectly answered feedback**

**b. They must be transparent.      c. It is strong.**

[Answers](#) | [Edit](#) | [Duplicate](#) | [Used In](#) | [Reorder](#)

[Remove From Test](#)